



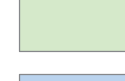


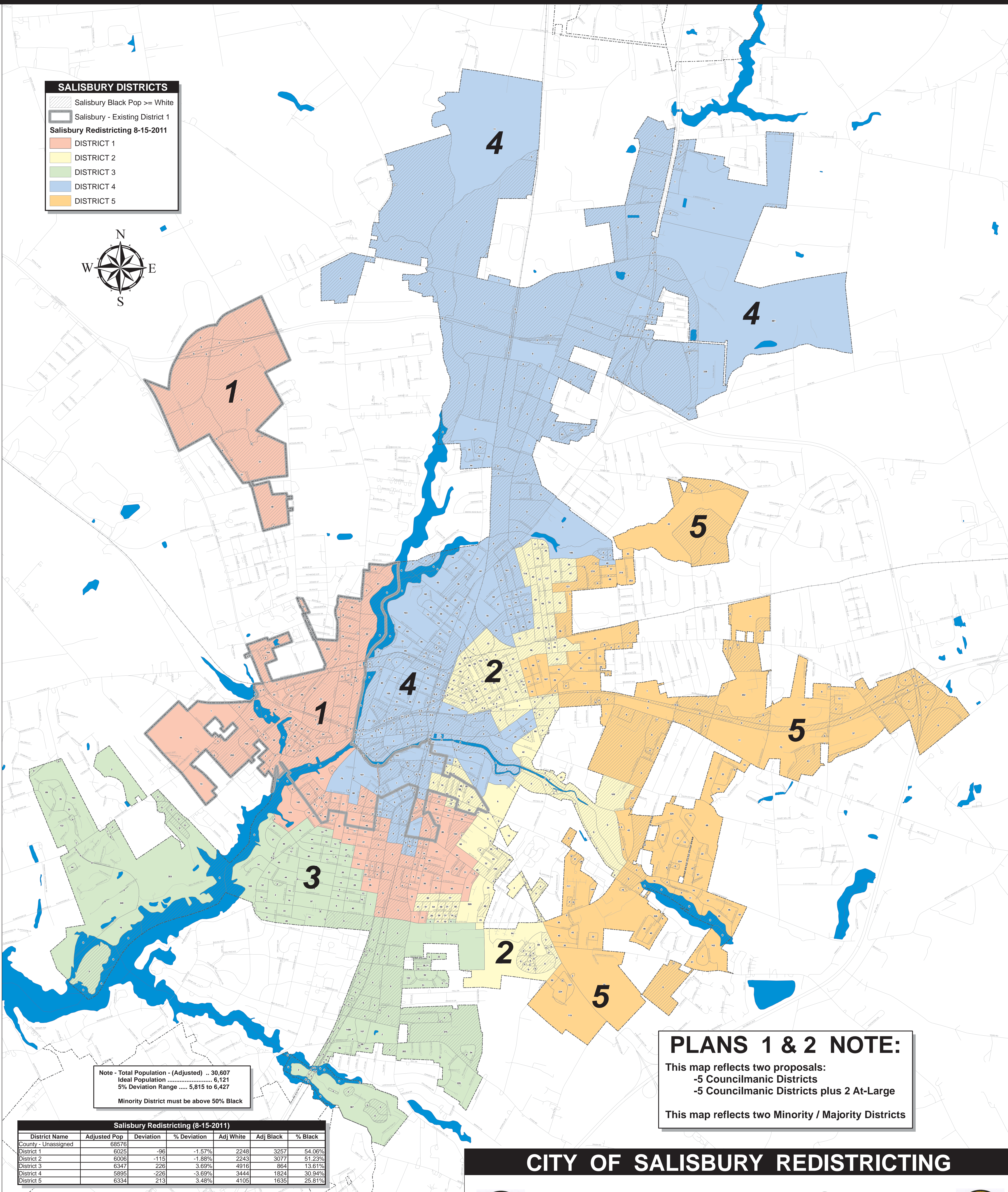
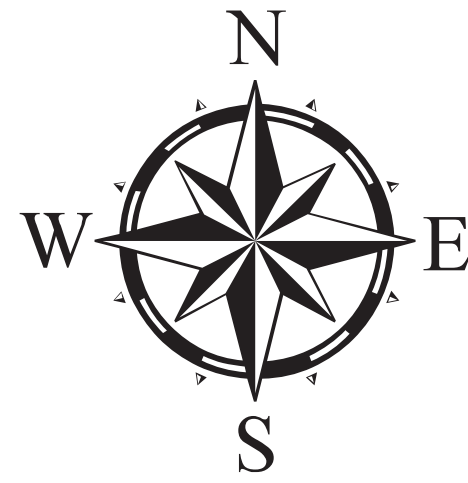


MAYOR IRETON'S PROPOSED REDISTRICTING

SALISBURY DISTRICTS

-  Salisbury Black Pop >= White
-  Salisbury - Existing District 1
- Salisbury Redistricting 8-15-2011**
-  DISTRICT 1
-  DISTRICT 2
-  DISTRICT 3
-  DISTRICT 4
-  DISTRICT 5



Note - Total Population - (Adjusted) .. 30,607
 Ideal Population 6,121
 5% Deviation Range 5,815 to 6,427
 Minority District must be above 50% Black

PLANS 1 & 2 NOTE:
 This map reflects two proposals:
 -5 Councilmanic Districts
 -5 Councilmanic Districts plus 2 At-Large
 This map reflects two Minority / Majority Districts

Salisbury Redistricting (8-15-2011)						
District Name	Adjusted Pop	Deviation	% Deviation	Adj White	Adj Black	% Black
County - Unassigned	68576					
District 1	6025	-96	-1.57%	2248	3257	54.06%
District 2	6006	-115	-1.88%	2243	3077	51.23%
District 3	6347	228	3.63%	4916	864	13.61%
District 4	5895	-226	-3.69%	3444	1824	30.94%
District 5	6334	213	3.48%	4105	1635	25.81%



CITY OF SALISBURY REDISTRICTING

- Plans 1 & 2 -

